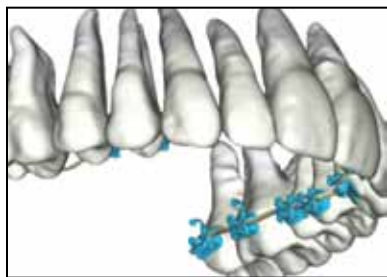


PRODUCT NEWS

Customized Lingual System

SureSmile QT, a new lingual treatment option from OraMetrix, combines computerized treatment planning and robotic archwire fabrication with the practitioner's chosen lingual bracket in either or both arches, according to the company. SureSmile software is designed to manage the small lingual interbracket distances and to compensate for less-than-ideal bracket placement. Lingual retainers can also be fabricated using the system.



For additional information, contact OraMetrix, Inc., 2350 Campbell Creek Blvd., Suite 400, Richardson, TX 75082. (972) 728-5500; www.orametrix.com.

Sliding Auxiliaries

Ortho Technology's EZ Sliders are interchangeable stainless steel auxiliaries that can create parallel distal or mesial forces in either arch when attached to buccally placed miniscrews and coil springs, according to the company. The vertical arms are designed to clip easily to any archwire, and the coil-spring hooks are color-coded for easy identification. EZ Sliders are available in lengths of 12.5mm, 20mm, and 30mm.



For additional information, contact Ortho Technology, 17401 Commerce Park Blvd., Tampa, FL 33647. (800) 999-3161; www.orthotechnology.com.

Cone-Beam Imaging

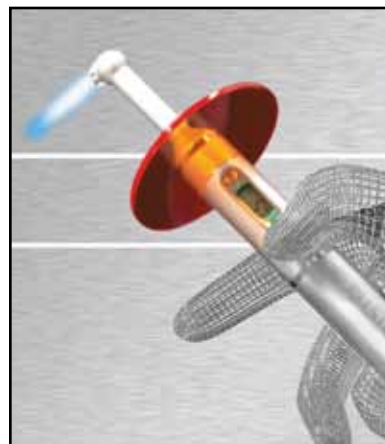
The ProMax 3D MID imaging unit features adjustable kV and mA settings, with a pediatric mode that automatically reduces radiation levels for children, according to the manufacturer. Both two- and three-dimensional images can be taken, including panoramic, bite-wing, and cephalometric records, plus complete 3D maxillofacial reconstructions or slices such as the sinus cavity or the respiratory tract. Diagnostic software is embedded, and the system can also be integrated with third-party software.



For more information, contact Planmeca USA, Inc., 100 N. Gary Ave., Suite A, Roselle, IL 60172. (630) 529-2300; www.planmecausa.com.

LED Curing Light

GAC's Fusion LED 3.0 Curing Light features both standard LED and high plasma-level power settings in an anodized aluminum body that weighs only 3.9oz, according to the manufacturer. Each unit includes an interchangeable, 360°-swiveling light probe with a large, 10mm tip, as well as a rechargeable, replaceable lithium battery designed to provide 540 five-second cures on a single charge. Blue, pink, and silver body colors are available.



For additional information, contact Dentsply GAC, 355 Knickerbocker Ave., Bohemia, NY 11716. (800) 645-5530; www.gacintl.com.

PRODUCT NEWS is presented as a service to the reader and in no way implies endorsement by JCO.